

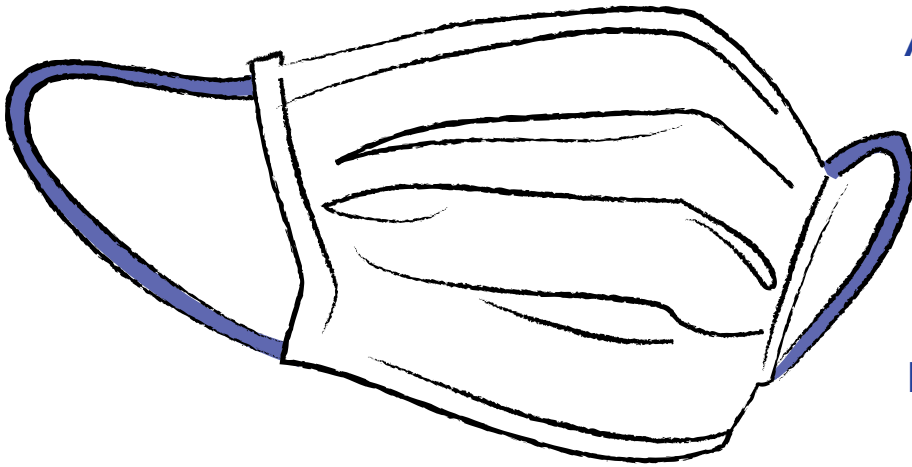
**Nitto**

Innovation for Customers

# Surgical face mask Type IIR



# Protection you can trust

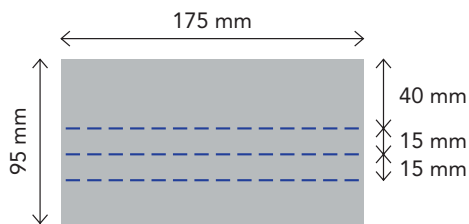


As an experienced producer for components in the hygiene industry, Nitto transferred this knowledge to manufacture facemasks under the highest hygiene standards.

#### Materials:

- Produced with high-quality raw materials
- Flexible nose clip
- Elastic ear loops

#### Dimensions:



#### Benefits & characteristics:

- Universal fit
- 3-layer composite
- Disposable
- $\geq 98\%$  filtration efficiency
- Breathable, easy ventilation
- Splash resistant
- Skin-friendly
- Colour: blue
- Positive CO<sub>2</sub> footprint via raw material supply from close proximity partners

## Breathe easy with Nitto's high-quality surgical face masks.

#### Surgical face mask:

- ProfessionalMed (Type IIR)

#### Product features:

- Mask Type IIR designed for higher resistance to liquids
- Soft edges for more comfort
- In-house melt-blown production for reliable filtration efficiency

#### Technical performance:

- Bacterial filtering performance [BFE], [%]  $\geq 98$
- Pressure difference [Pa/cm<sup>2</sup>]  $< 60$
- Spray resistance pressure [kPA]  $\geq 16,0$
- Microbiological purity [KBE/g]  $\leq 30$
- Resistance to liquid splash: yes

Further  
DETAILS



#### Packaging:

- Safe and hygienic plastic enclosures
- Units per pack: 50 masks
- In cardboard box with release tab



## Product conformity

Supported by the Johner Institute for regulatory compliance, our mask production uses state-of-the-art materials to ensure protection, comfort and safety.

In Cooperation with:

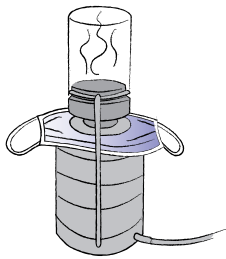


### Product conformity:

EN 14683:2019 + AC:2019 and CE certification

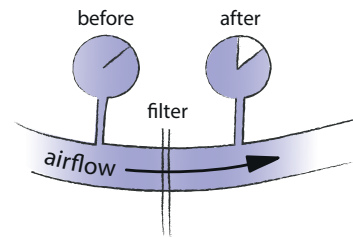
## Test Criteria

For surgical face masks  
according to European Norm 14683:2019



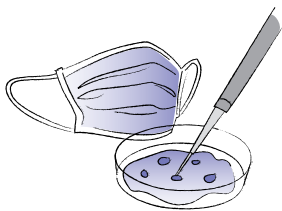
### Bacterial filter performance:

A test bacterium is tested for penetration through the mask material from an aerosol chamber under vacuum. The in-house produced meltblown in particular serves as an ideal barrier for reliable filter efficiency.



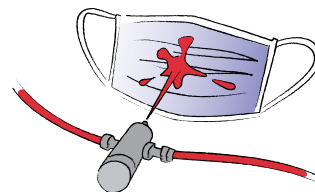
### Breathing resistance:

The pressure difference – the air permeability of the mask – is measured as an indicator of the breathing resistance under specific conditions of airflow, temperature and humidity.



### Microbiological purity:

In the case of microbiological purity, also referred to as germ load, the number of viable microorganisms is checked on a non-sterile test material.



### Resistance to liquid splash:

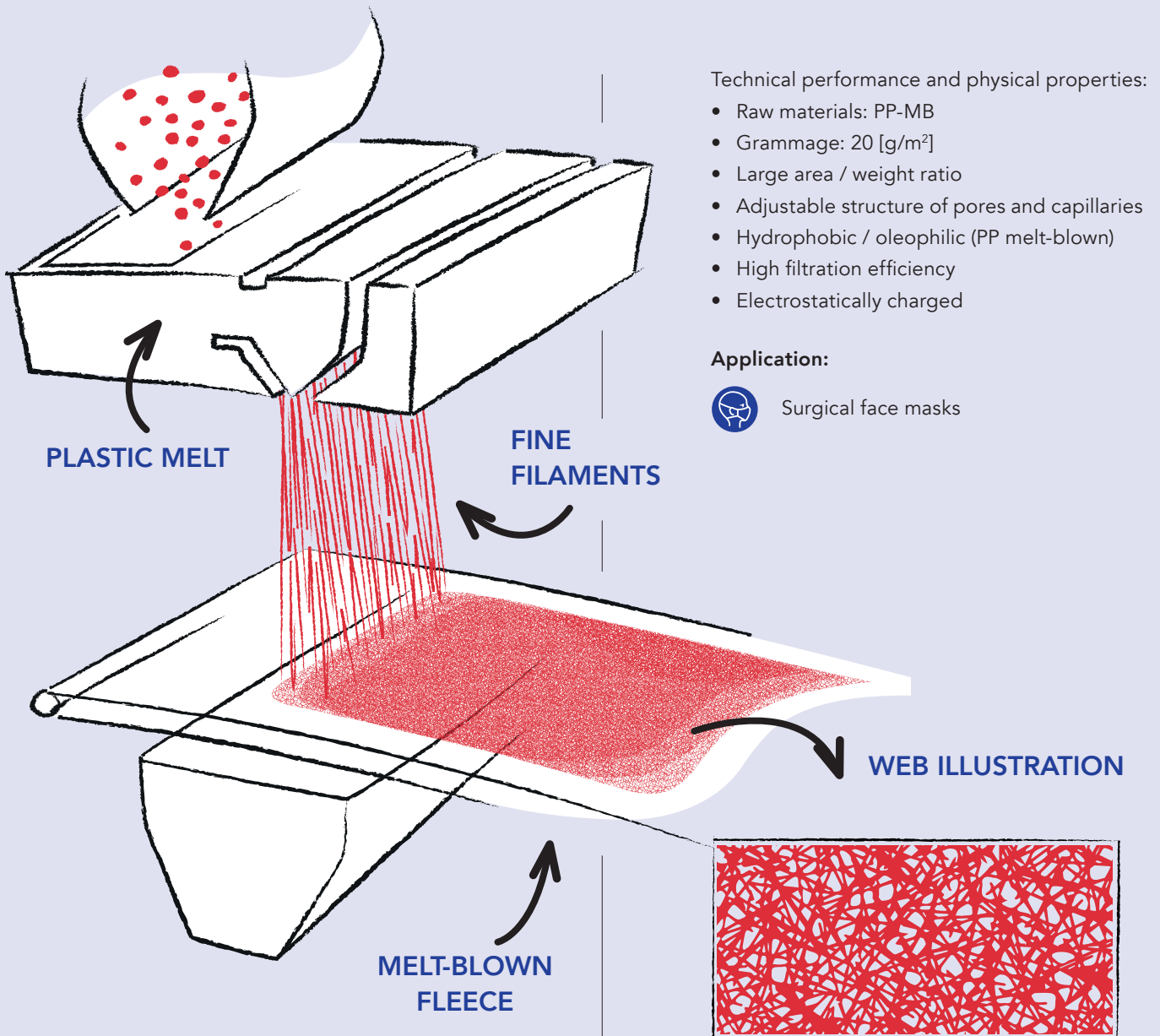
Splash Resistance is a measure of the mask's ability to prevent liquid splash penetration. The required value equals the average systolic blood pressure of a healthy person.

Certified quality:



## Melt-blown MB med

When it comes to protecting medical staff and their patients, high-quality face masks can make all the difference. Nitto's surgical face masks (EU Standard Type IIR) are assembled with melt-blown nonwovens made in-house in our German production facility.



### The process described:

The plastic melt is spun out through a nozzle, which consists of a row of several hundred pin holes. Hot air flows out on both sides of the nozzle tip transforming the polymer streams

into very fine filaments. These filaments are drawn by highspeed hot air onto a filter belt. The result is a melt-blown fleece with good barrier and filtration properties.

## Masks made by Nitto

Nitto's surgical face masks protect with quality and integrity.



Latex-free, no fibreglass, low-allergen,  
skin-friendly face masks



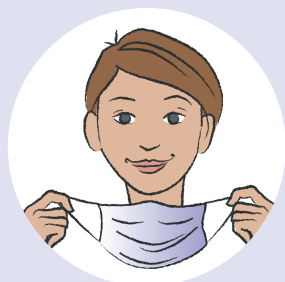
Flexible nose clip  
for optimal hold



Type IIR tested according  
to EN 14683:2019 + AC:2019

## How to use

For optimal protection, please follow the enclosed instructions.



### Step 1

Touch the mask  
only by the straps  
and outside.  
Do not touch the  
white surface inside.



### Step 2

Hold the mask  
with the nose clip  
facing up and  
secure the ear loops  
behind your ears.



### Step 3

Press the nose clip  
comfortably to  
your nose so that  
the mask fits  
as close as possible.



### Step 4

Pull the folds apart.  
Place the bottom of  
the mask under your chin  
so that it completely  
covers your mouth.

### Taking off the mask:

Clean your hands. Carefully remove the mask from your face by the ear bands. Do not touch the mask body.  
Then immediately discard the mask and wash or disinfect your hands.



**Usage:** Product intended for single use.

**Storage:** Store in a dry place in the original packaging, out of direct sunlight.

**Max. shelf life:** 3 years

**Disposal:** The product can be thermally recycled or disposed of in landfills without releasing toxic substances. In the case of contaminated products, the type and extent of the contamination determines the disposal; applicable laws and regulations must be observed.

**For more  
information:**  
[www.nitto.com](http://www.nitto.com)

We are a global leading supplier of elastic and nonwoven solutions for the hygiene industry offering comprehensive baby care, adult incontinence, femcare, and nonwoven materials.

Nitto's melt-blown surgical face masks are made in Germany under the highest hygiene standards in a hands-free environment. Certified by the Johner Institute, these face masks are made using high-quality sources, ensuring that the material and components are reliable and comfortable from the moment they are put on to when they are removed. We strive to make comfort a way of life and protect medical personnel with quality and integrity.



## **Nitto Advanced Film Gronau GmbH**

Jöbkesweg 11, 48599 Gronau, Germany

TEL +49 2562 919-0

<https://www.nitto.com/eu/en/>